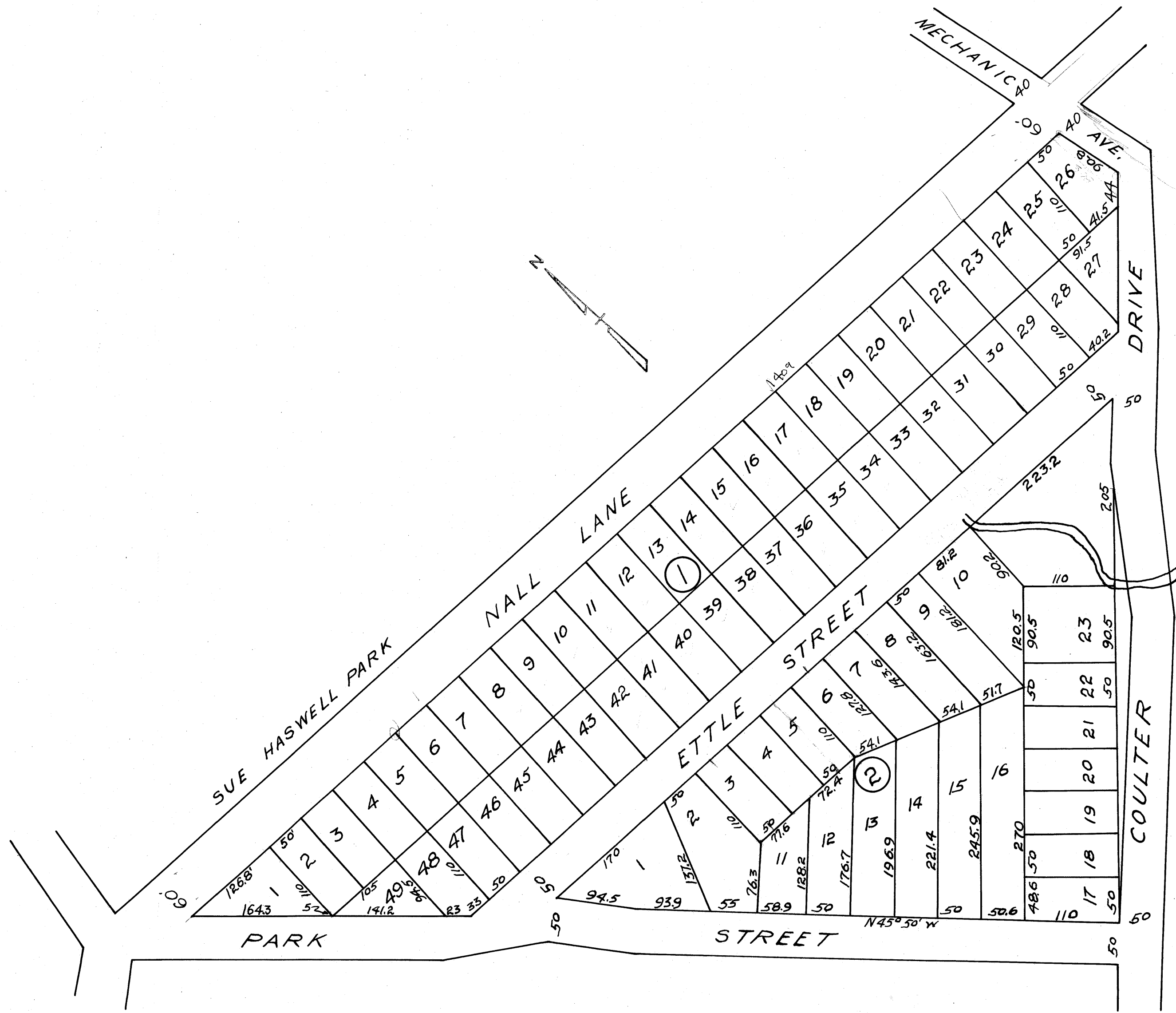


on base  
w/ sides



JOHN F. EITTLE ADDITION  
 NO. 2, BLOCKS 1 & 2  
 TO CITY OF BRYAN, TEXAS  
 D.R. 98 P. 627 JAN. 17, 1939  
 Scale: 1"=100'  
 Drawn By J. J. Caddess

DRAFTMAN'S NOTE: Block 1 Copied from plot recorded on page 415, Vol. 89, Deed records of Brazos County, Texas. Details of widening of Northeast end of Coulter Drive not available.